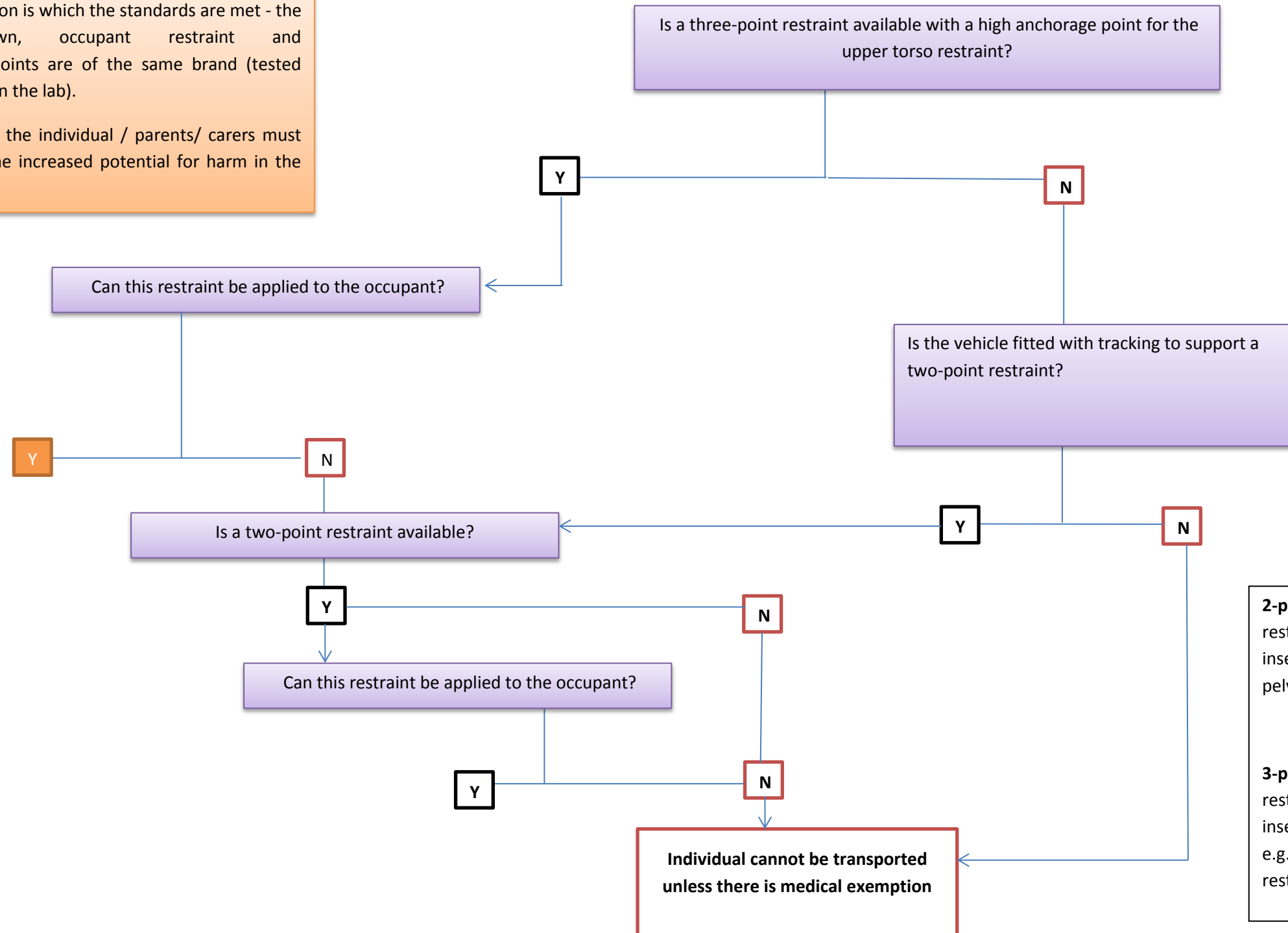


Transporting people with disabilities – securing the occupant

Y This is the only situation in which the standards are met - the wheelchair tiedown, occupant restraint and tracking/anchorage points are of the same brand (tested and passed together in the lab).

In all other instances the individual / parents/ carers must be made aware of the increased potential for harm in the event of an accident.



2-point occupant restraint: an occupant restraint ("seat belt") that has the origin and insertion points on the vehicle floor, e.g. pelvic occupant restraint

3-point occupant restraint: an occupant restraint ("seat belt") that has the origin and insertion points on the vehicle floor and wall, e.g. pelvic and diagonal shoulder occupant restraint